



For Win



Graphic Tablet

User Manual





CONTENT

- I. General Information** **3**
- 1. Overview 3
- 2. Graphic Tablet Functions 3
- 3. System Requirements 3
- 4. Installing the Driver On Windows 3
- 5. Hardware Installation 3
- 6. Verifying Hardware and Driver Functions 4
- 7. Usage Tips 4

- II. Driver Interface Introduction** **5**
- 1. Control Interface 5
- 2. Pen Buttons Settings 5
 - 2.1 Key Functions 5
- 3. Pen Pressure Sensitivity Test 6
- 4. Advanced Setting 6
 - 4.1 Workspace Settings 6
 - 4.1.1 Soft Keys Settings 7
 - 4.1.2 Express Keys Settings 7
 - 4.2 No Shortcut Keys 7
- 5. Digital Pen Pressure Sensitivity Adjustment 8
- 6. Support TabletPC 8

- III. Pen Storage and Maintenance** **9**
- 1. AAA Battery Pen 9
- 2. Rechargeable Li-ion Battery Pen 10

- IV. Question & Answer** **11**





I. General Information

1. Overview

Welcome to the world of Huion tablet and Huion digital pen! You are able to discover how easy is to control your personal computer by using a wireless digital pen instead of a mouse. The function of the digital pen is able to draw a very thin, thick, light or dark line, which is called pressure sensitivity. You can write, sign, correct documents, edit photos, draw, sketch or paint as easily as you would do on a normal paper and simulate the functions like pencil, marker pen, brush, or water color pen by using the commercial software packages such as Adobe Photoshop, Corel Painter and Paint Shop and many others.

2. Graphic Tablet Functions

After installing the driver, your graphic tablet has the following functions:

- (1) Direct pointing — you can move the cursor to any area of the screen by hovering the digital pen tip over the tablet's surface.
- (2) Three-buttons mouse commands — your graphic tablet provides all functions of a three-buttons' mouse by using its pen tip and two buttons.
- (3) Pressure sensitivity — this feature allows you to simulate various brushes and pencils so you can press down the pen tip harder, lighter, then the wider and thinner line you will get.

3. System Requirements


Windows 7 / Windows 8 / Windows 8.1 / Windows 10

4. Installing the Driver on Windows

Please close all painting software and antivirus software before driver installation.

Please do not connect the USB cable before driver installation.


For Microsoft Windows 7, Windows 8, Windows 8.1 and Windows 10 operating systems:

- (1) Insert the Driver CD into the CD-ROM drive, and wait for the main installation screen to appear.
- (2) The main installation screen should appear automatically, or you can manually start the installation by opening [My Computer] [CD/DVD Rom] then click on the [Setup] program.
- (3) When installing the driver, follow the installation instructions on screen.
- (4) After finishing the driver installation, you will see a small tablet icon () appears in the system tray, at the lower right corner of the screen, which is normal.

5. Hardware Installation



Connect the tablet via USB cable to the PC after the driver installation is finished.

After connecting, the cross on the tablet icon () will disappear.





6. Verifying Hardware and Driver Functions

6.1 USB wired graphic tablet

* The following picture is for reference only to H610, the picture might vary with different models.



6.2 Follow the steps to verify if the tablet is installed properly

The LED light on the tablet is the main indicator for hardware functionality. Depending on your graphic tablet model, it may be located at a different place of the tablet. That is shown in the diagram above. This LED indicator normally stays off, and will only turn on or off in response to various conditions. Watch the state of the LED on the tablet as you go through these test steps:

- (1) For battery pen, press down the switch button at the top of the pen, then the pen will be turned on and activated. If you want to quit your work, press it again to turn it off. For rechargeable pen, tap on any surface with the tip of the pen to “wake it up”.
- (2) As soon as the graphic tablet itself is activated, the LED will be lit briefly, and will turn off again.
- (3) When the tablet detects the presence of the digital pen, the LED will blink slowly. This happens either when pen tip is hovering or placing within the working area of the tablet.
- (4) When you press a button on the pen barrel, the LED will be lit up.
- (5) Hovering and moving the pen in the working area will cause the cursor on the screen to move accordingly.

7. Usage Tips

(1) Double tapping

When you double tap with the digital pen (equivalent to the mouse double click), try to keep the pen's tip away from the tablet's surface, or at least try to lift the pen tip as fast as possible before the second tap.

(2) Storing the digital pen

While storing the pen, make sure the pen tip does not touch anything, especially do not let the pen stand in a cup or pen holder with the tip down. Even though the possibility is low, constant stress on the pen tip might damage sensitive pen structure. Place the pen in a pen holder, or turn the pen tip pointing upward or horizontally with the pen tip free of any pressure by other objects.

(3) Using a pen without an ordinary mouse

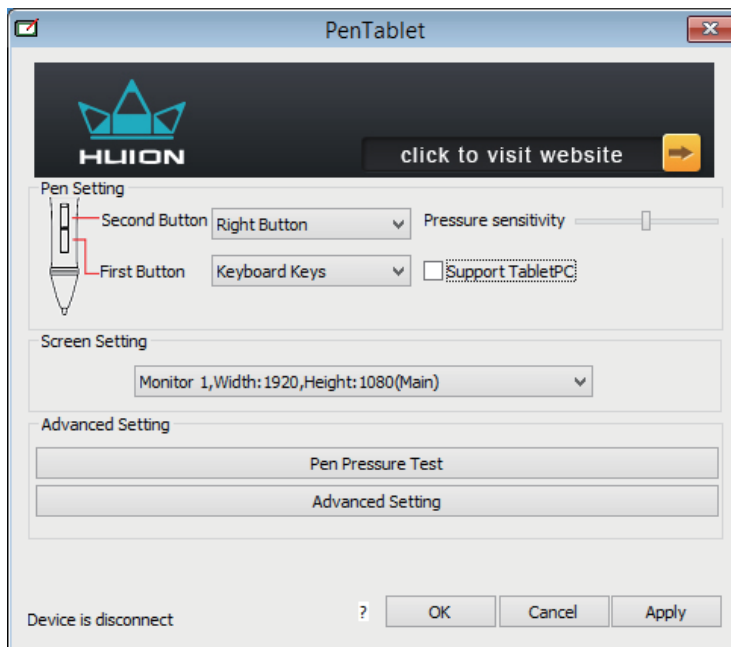
You may install a digital pen, a digital mouse, and a normal mouse on your computer at the same time. However, only one device is able to work at once.

* Do not use more than two devices at the same time in case the screen cursor is jittering or not moving.



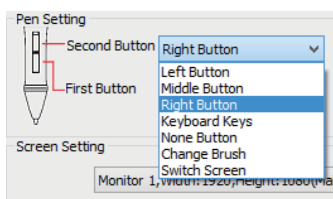
II. Driver Interface Introduction

1. Control Interface

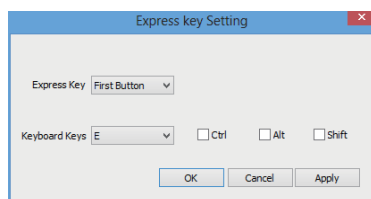


When you double click the driver tablet icon () which normally appears in the system tray at the corner of the screen, you will see the control panel (picture above). It will display driver related information. You can set functions for the pen buttons and regulate the pen pressure sensitivity.

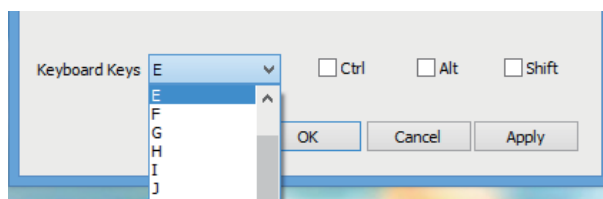
2. Pen Buttons Settings



I



II



III

2.1 Key Functions

You can set any various mouse functions for the digital pen (see Picture I). "Left Button, Middle Button, Right Button, Keyboard Keys, None Button, Change Brush and Switch Screen" on the corresponding right drop-down menu of the "Second Button and First Button".

Note:

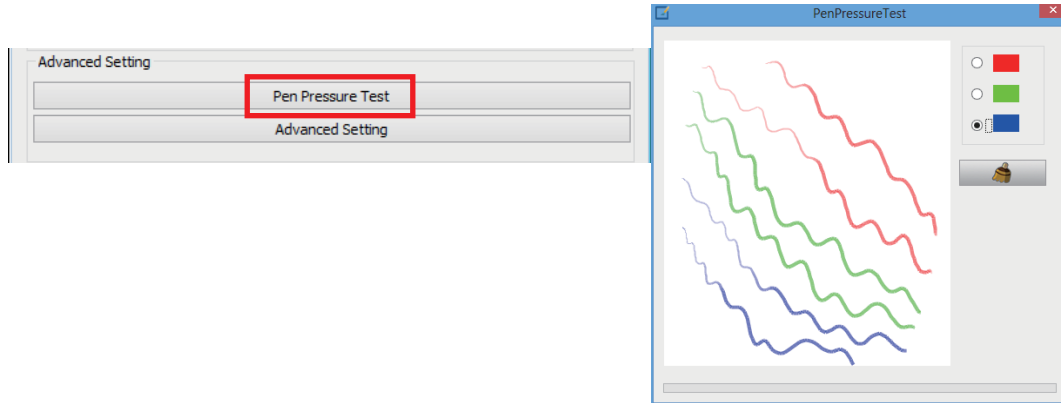
- (1) "Left Button, Middle Button, Right Button" functions represent for a normal mouse left, middle, right button functions.
- (2) When choosing "Middle Button", the corresponding pen button will have the same "press" function as a normal mouse, but it will not have the "scroll" function.
- (3) When choosing the "Keyboard Keys", there will appear an "Express Key Settings (as Picture II). You can set the pen button functions as the same as any "Express Key" or "Keyboard Keys" functions (as Picture III).

Digital pressure sensitive pen default setting functions:

- (1) The pen tip is equivalent to the mouse left button function.
- (2) When the first key is E, you can switch it to eraser in the graphic software (such as photoshop etc.)
- (3) The second key is equivalent to the mouse right function.

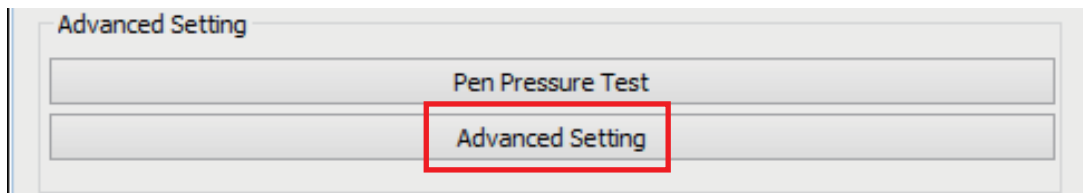
3. Pen Pressure Sensitivity Test

Click the control interface into Pen Pressure Sensitivity Test.

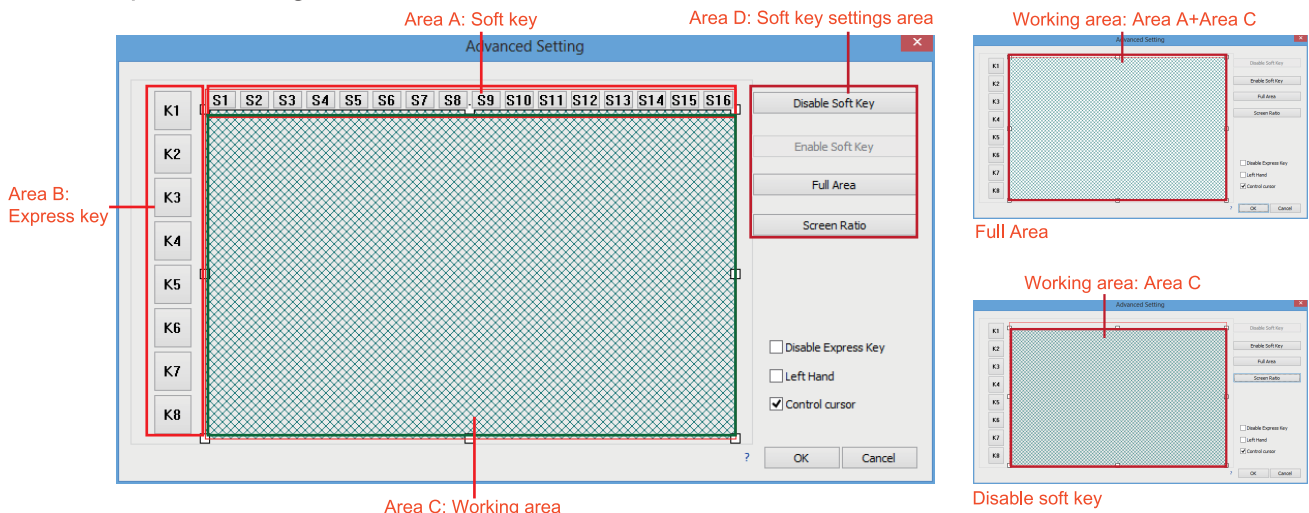


4. Advanced Setting

Click the “Advanced Setting” (see the selected area below), you can access into the working area and keys function settings.



4.1 Workspace Settings



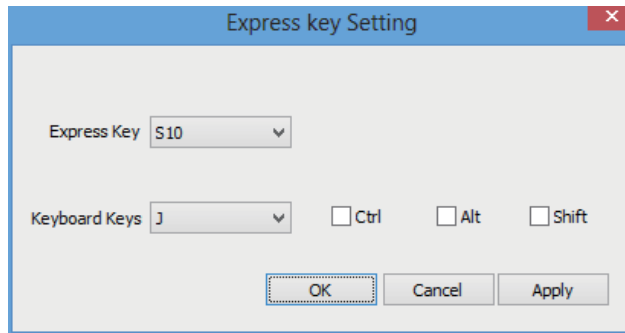
- Area A: Soft key area
- Area B: Express key area
- Area C: Working area
- Area D: Soft key has three settings: “Soft key Disable, Soft keys Enable, Full Area”.

Sofkeys Disable: select this key, the key function will be disabled in the working area. The graphic tablet’s working area is limited in the C area.

Softkeys Enable: select this key, the function shortcut keys will be enabled in the work area of the graphic tablet.
 Full Area: full range selected, graphic tablets' working area will be expanded to Zone A plus Zone C, soft key function is disabled.

Note: Some models do not have Express Key or Soft Key functions.

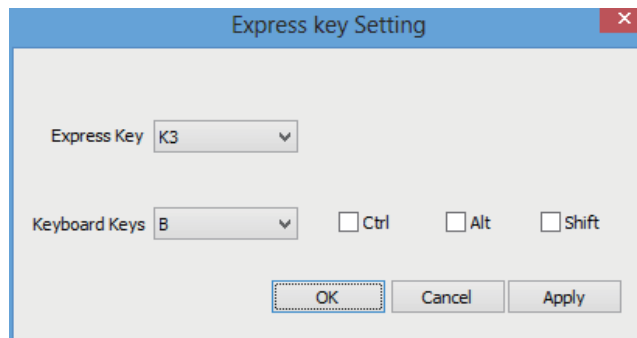
4.1.1 Soft Key Settings (only for some model of graphic tablet with soft keys)



Click any soft keys to enter into the Soft keys' function setting screen(pictured above).

Note: Some models do not have Express Key or Soft Key functions.

4.1.2 Express Key Settings (only for some models of graphic tablet with express keys)

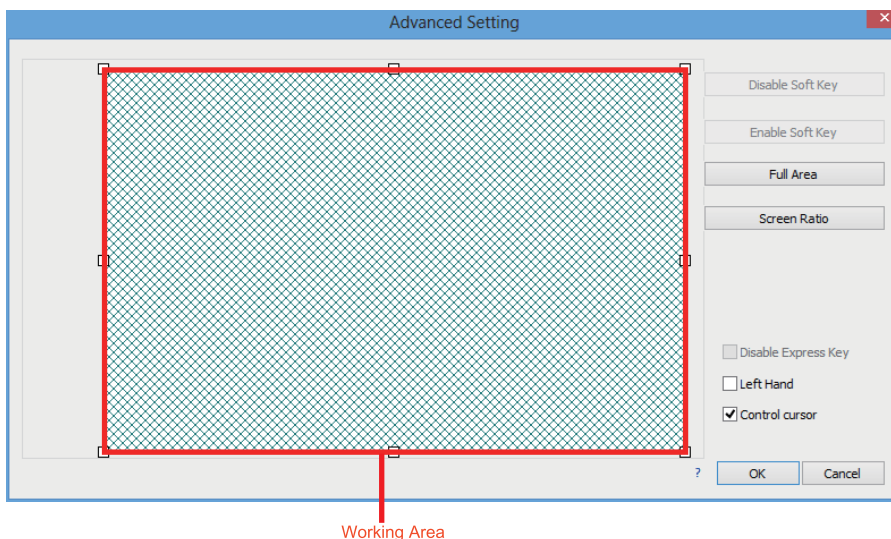


Click any Express keys to enter into the Express Key Settings screen(pictured above).

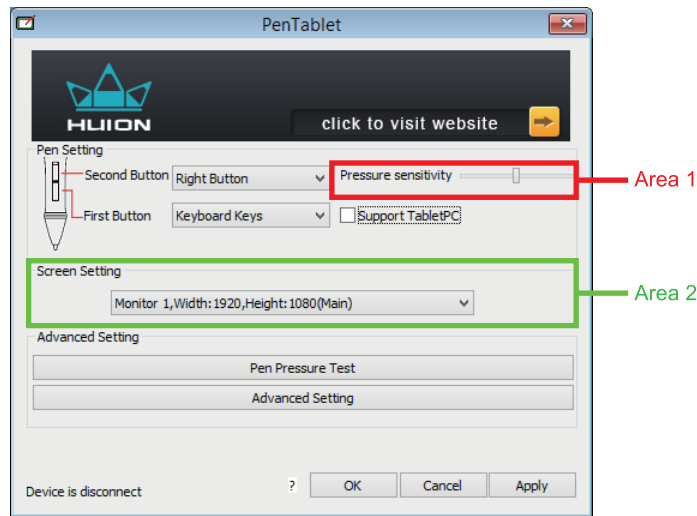
Note: Some models do not have Express Key or Soft Key functions.

4.2 No Shortcut keys

(only for some model of graphic tablet without shortcut keys)



5. Digital Pen Pressure Sensitivity Adjustment

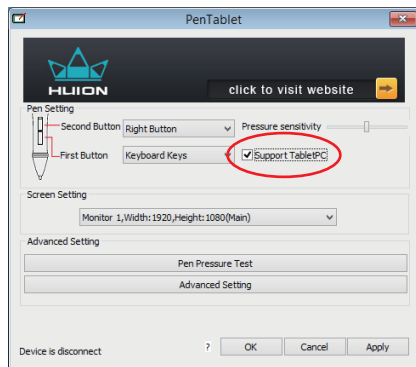


Pressure Sensitivity:

Move the slider from left to right, it can be used to adjust the sensitivity of the tip and the severity of the stroke when drawing, which affects the change of the handwriting(Area 1).

Screen Setting:

When your computer is connected with two screens and use the extended mode, you can choose the corresponding working area of the graphic tablet in the setup screen area(Area 2).

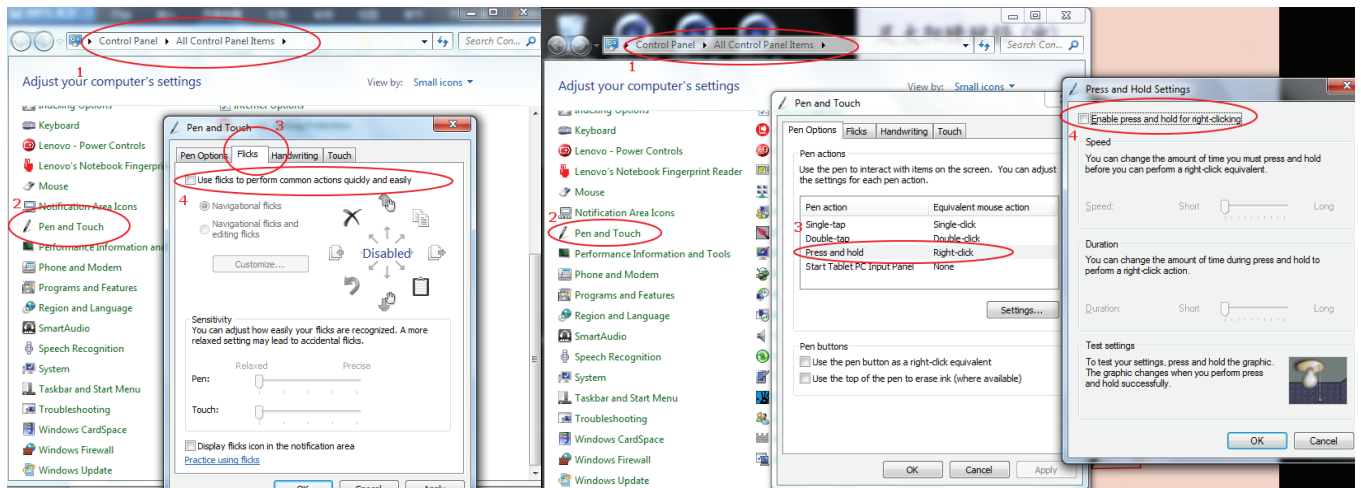


6. Support TabletPC

Also called Electronic Ink Function, which is normally used for supporting pressure sensitivity under Office 2007, Journal or later version. For Sketchbook 6.0, Photoshop CC2014(or later) on Windows8 or later system, checking "Support TabletPC" is needed to support pressure sensitivity.

As for other drawing software, please read the software instruction carefully to see whether it supports windows TabletPC or not, and try to disable Support TabletPC if it is needed.

As the "Support TabletPC" checked, please turn off flicks to get a better using experience.



III. Pen Storage and Maintenance

1. AAA Battery Pen

1.1 Storing the AAA Battery Pen

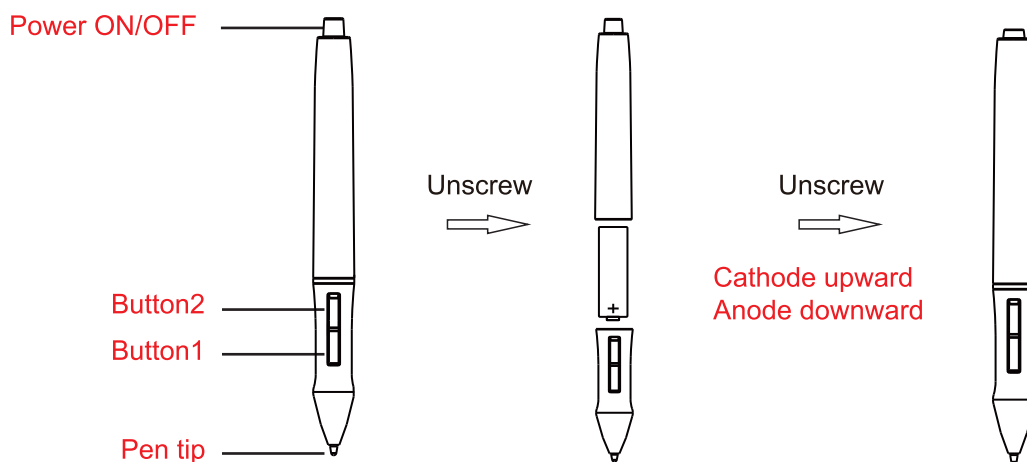
The AAA battery pen should be stored in such a way that nothing touches the tip. Prolonged pressure on the tip, even a slight pressure, can damage the ability of the pen to use the full range of pressure sensitivity.

If the pen will simply be unused overnight or for any other short period of time, placing it in the included pen holder or horizontally on the desk is sufficient. For long-term storage or shipping, the tip and battery should be removed.

1.2 Replacing the Battery in the AAA Battery Pen

To install, remove, or replace the battery in the AAA battery pen, perform the following steps:

- a. Unscrew the top half of the pen from the bottom half. The junction is at the upper edge of the rubberized grip portion of the pen.
- b. Allow the old battery to fall out of the top half of the pen. Dispose of the battery in accordance with local regulations.
- c. Insert a new AAA alkaline battery (not included) in the top half of the pen. The positive lead should be visible in the open pen half so that it makes contact with the bottom half when the pen is reassembled.
- d. Carefully line up the threads of the bottom and top halves of the pen and screw it together. Take care not to cross thread the pen because the plastic threads can be easily damaged. Screw the pen together firmly but not too tight.

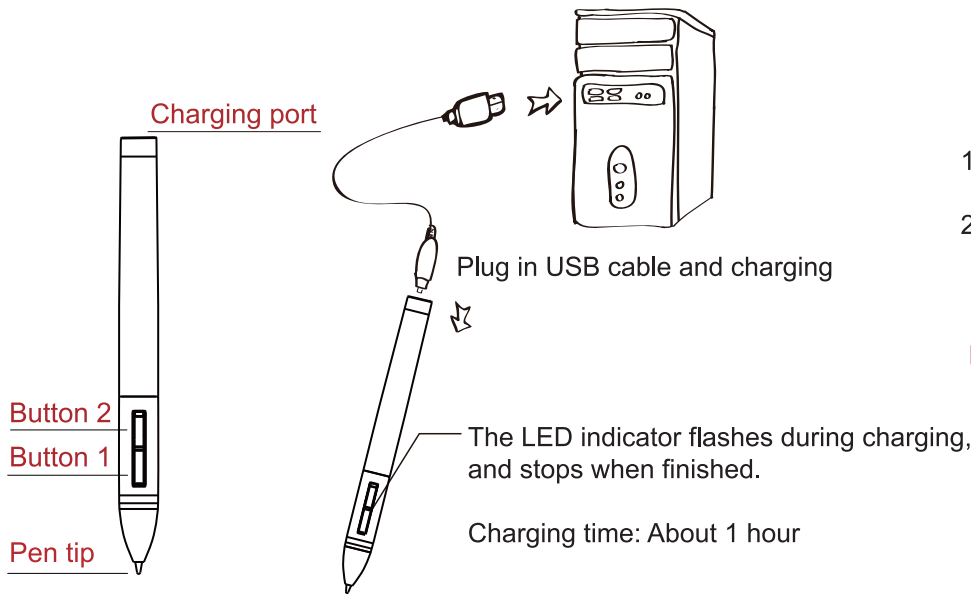


1.3 Replacing the Pen Tip

If the pen tip needs replacing or removal due to long-term storage, perform the following steps as applicable:

- a. Open the pen holder and remove the metal pen clip.
- b. Position the pen clip over the exposed portion of the pen tip. Squeeze the clip with your fingers to provide a firm grip on the tip.
- c. Pull gently until the tip is completely removed.
- d. Take a replacement tip out of the pen holder and gently insert it into the pen until it is fully seated into place.
- e. Use the Pressure Test dialog in the driver utility to test the operation of the newly replaced tip.

2. Rechargeable Li-ion Battery Pen

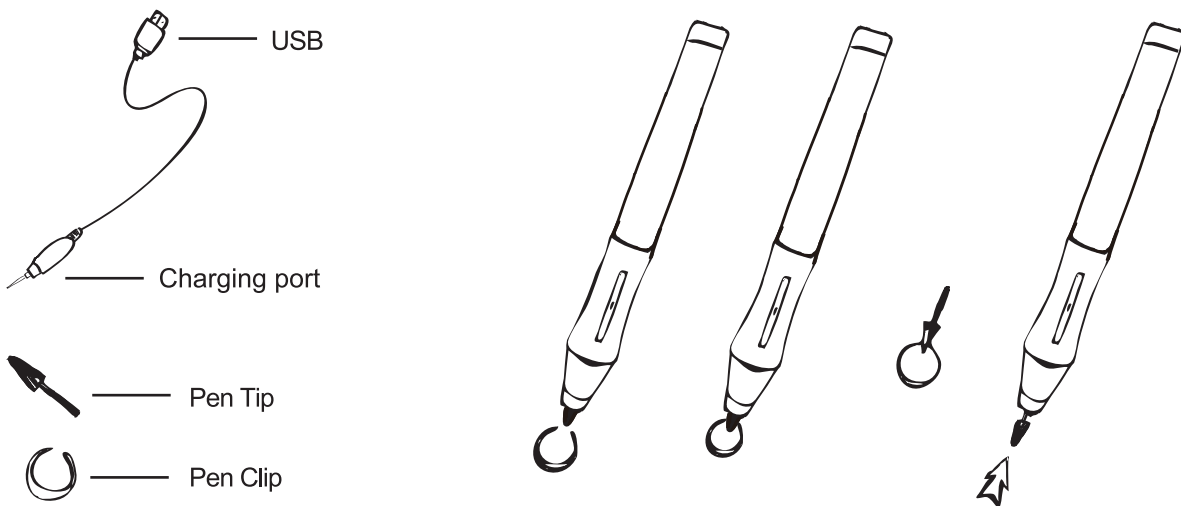


1. Tap on any surface with the tip of the pen to "wake it up".
2. It will "auto sleep" if not used for a period of time.

Note: If the line is unstable, it means you have to charge.

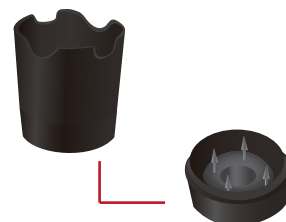
Replacing the rechargeable pen tip

A: Pull out the pen tip from rechargeable pen by using the pen clip that is inside of the pen holder.



B: Push the pen tip into the rechargeable pen and make sure fit it up to the end properly.

Gently unscrew the pen holder in a counterclockwise direction. You will see one pen tip replacement tool & 4 spare pen tips inside.





IV. Question & Answer

Question 1: How can I get an updated software?

Answer: You can download the latest driver from our official website www.huion-tablet.com or www.huiontablet.com, or you can send us an email: service@huiontablet.com.

Question 2: The tablet does not work. What can I do?

Answer: Please follow one of the steps as mentioned below:

- a. Close and restart your software (such as PS, Painter) to check if it works.
- b. Restart your computer.
- c. Uninstall your driver, download the latest driver and install it.
- d. Change to another computer and then try your Graphic Tablet.

If the Graphic Tablet still does not work, please contact our service center for assistance.

Question 3: Why does the cursor moves and flashes constantly even when I haven't moved the pen?

Answer: It could be because some electronic devices emit electromagnetic interference.

Please maintain the distance of at least five inches between the Graphic Tablet and other electronic equipment.

Question 4: There is no pressure sensitivity in the drawing software but still the cursor moves while moving the pen, why?

Answer: You may have installed other drivers or opened the drawing software while installing the driver. Please uninstall all drivers and close the drawing software, then reinstall the Huion drive. Once installation is finished, open the drawing software to check if it works.

Question 5: How to deal with abnormal drawing problems in the painting software?

Answer: Please follow these steps in control panel and graphic driver panel.

- (1) Uncheck the "Support Tablet PC" in graphic driver panel.
- (2) Turn off the "Flicks" in "Pen and Touch" in control panel.
- (3) Cancel the "Press and Hold" in "Pen and Touch" control panel.

